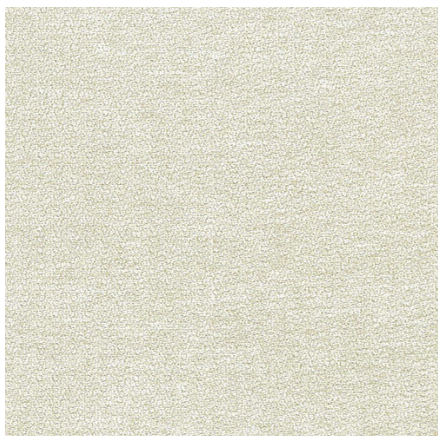


# Seattle

Fabric | S

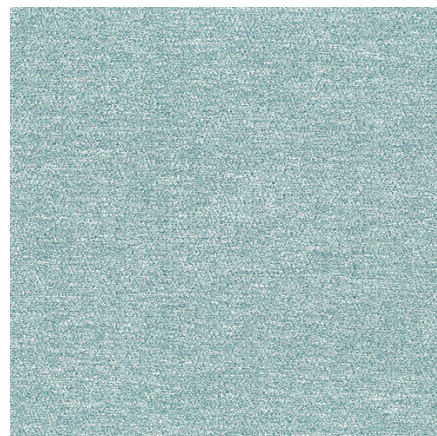
Composition: 100% Polyester | Weight: 330 g/m<sup>2</sup> | Resistance: >46.000 Martindale



04



16



17



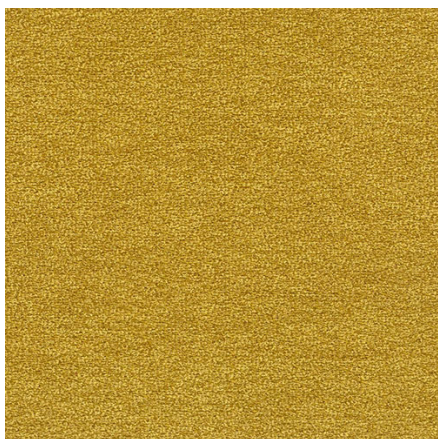
18



26



34



35



36



46



**FLUID STOP**  
Liquid-repellent

The purpose of this promotional material is to provide the necessary information. We kindly ask you to take into consideration that the on-screen images may differ from the actual color varieties, textures and structures of the material.

If you would like to have the complete "as-it-is" impression in the process of selecting the material for a set that will enrich your living or working space, we advise you to visit the showrooms that are displaying our products, where all relevant material samples we are working with will be at your disposal.



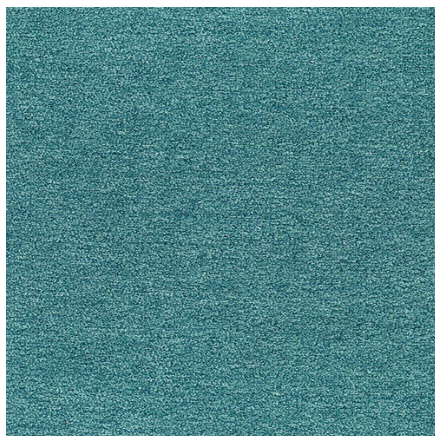
# Seattle

Fabric | S

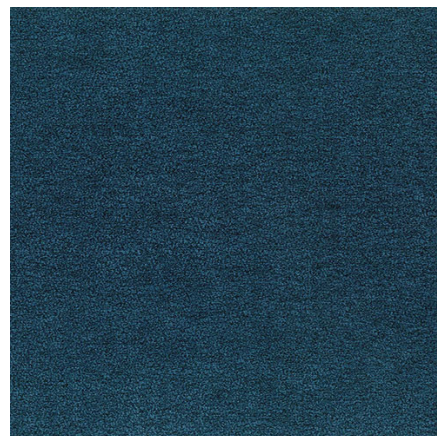
Composition: 100% Polyester | Weight: 330 g/m<sup>2</sup> | Resistance: >46.000 Martindale



53



57



67



74



**FLUID STOP**  
Liquid-repellent

The purpose of this promotional material is to provide the necessary information. We kindly ask you to take into consideration that the on-screen images may differ from the actual color varieties, textures and structures of the material.

If you would like to have the complete “as-it-is” impression in the process of selecting the material for a set that will enrich your living or working space, we advise you to visit the showrooms that are displaying our products, where all relevant material samples we are working with will be at your disposal.